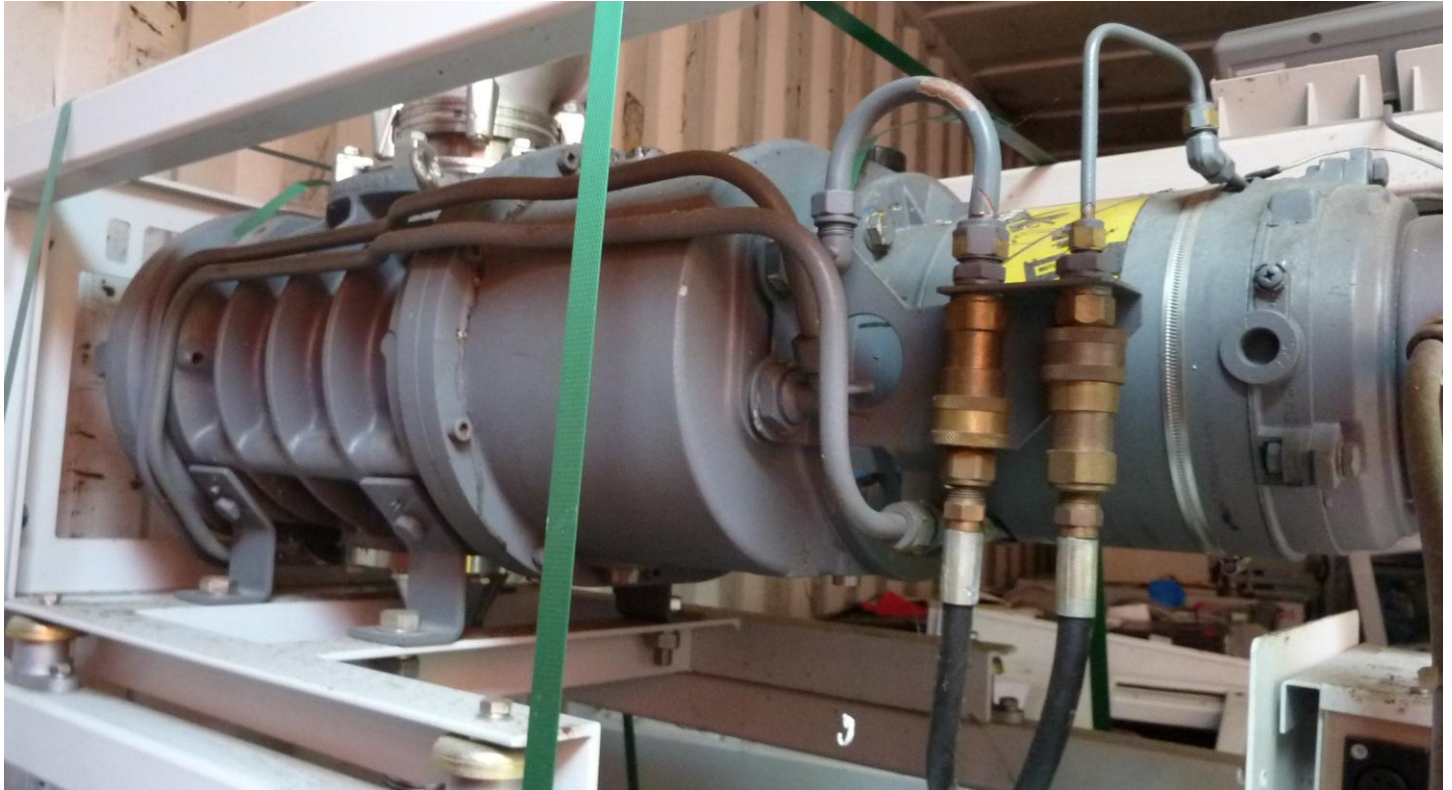


ISLAND SCIENTIFIC LTD

Reply to: Unit 9
Ventnor Industrial Estate
Station Road
Ventnor
Isle of Wight
PO38 1DX
England
Tel No: (0) 1983 855822
Fax No: (0) 1983 852146
E-Mail Address: sales@island-scientific.co.uk
Web Site: <http://www.island-scientific.co.uk>



*Vacuum Equipment, Used and Reconditioned for Technology,
Industry, Research and Education*



Make: Edwards

Model: QMB1200

Displacement: 1050 CMH

Inlet connection: ISO160

Outlet connection: ISO100

Type of oil: PFPE

Minimum size backing pump: 80 CMH

Motor power: 3 kW 415 V 3 Phase

Cooling: Water

Weight: 149 Kg

Length: 947 mm

Width: 380 mm

Height: 316 mm